

oerlikon
fairfield

FAIRFIELD
Torque-Hub®

行星齿轮减速机



FAIRFIELD Torque-Hub®

更紧凑，更高效的设计

用于固定设备和移动设备

菲尔费德Torque-Hub®行星减速机为工业机械和移动设备提供可靠的动力输出，及长效的寿命。

通用化的输入结构与轴、主轴和轮边等多种输出形式相结合，可满足许多动力传动的要求。此外，SAE标准的液压马达安装接口基本上可以与大多液压马达匹配。

菲尔费德Torque-Hub®行星减速机的上述特点及其宽广的扭矩输出范围和齿轮速比使之具有广泛的应用性，也使得菲尔费德Torque-Hub®产品成为全球客户的优选。我们全球知名客户提供各类设备应用于农业机械和工程机械，运输机械制造，非开挖机械，搅拌机，缆线机械，卷扬机，金属卷板机，破碎机，曝气机以及其他类型的应用等。

满足您需要的齿轮系统

菲尔费德Torque-Hub®拥有单级、二级、三级行星轮和差动行星轮传动结构，这些传动结构可以满足您对扭矩输出和转速的需要。

如果你需要更详细的信息，请与我们菲尔费德销售代表联系或参考我们的产品目录。

轮边驱动输出，轴输出和主轴输出



轮边驱动

作为理想的非公路设备的驱动装置，菲尔费德Torque-Hub®轮边驱动-也被用于各类绞车以及其众多海洋工程设备应用方面。轮边驱动减速机让设计工程师在动力传动装置的设计具有极大的灵活性和经济性。



轴输出

轴输出减速机提供同心直线动力传动，应用于运输机，搅拌机和非开挖机械。同时也可以应用于类似的要求的回转应用如高空平台车，起重机，挖掘机和测井设备等。



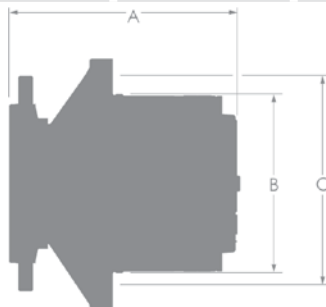
主轴输出

主轴的输出用于驱动小直径车轮的设备，例如升降平台和割草机等。同时也能满足其它法兰输出连接的需求。

行星齿轮减速机

轮边驱动产品

性能参数				机型参数				
型号	最大连续扭矩 lb-in (Nm)	最大间断扭矩 lb-in (Nm)	最大输入转速 (RPM)	最大径向负载 lb (kg)	名义速比 (x:1)	总长度 in (mm) A	止口安装 in (mm) B	螺栓布孔圆直径 in (mm) C
W07A	7,500 (850)	15,000 (1,690)	5,000	5,800 (2,636)	4	8.70 (221.0)	6.00 (152.4)	8.00 (203.2)
W1A	15,000 (1,690)	30,000 (3,390)	4,000	5,500 (2,500)	18 to 68	10.30 (261.6)	7.90 (200.7)	9.50 (241.3)
W1BF	15,000 (1,690)	30,000 (3,390)	4,000	5,500 (2,500)	18 to 68	10.30 (261.6)	7.90 (200.7)	9.50 (241.3)
W2B2	25,000 (2,820)	50,000 (5,650)	4,000	12,500 (5,682)	13 to 68	11.25 (285.8)	9.50 (241.3)	11.13 (282.7)
7HB0	30,000 (3,500)	60,000 (7,000)	5,000	5,500 (2,500)	19 to 132	9.30 (236.2)	7.89 (200.3)	9.50 (241.3)
7HBA	30,000 (3,500)	60,000 (7,000)	5,000	14,000 (6,364)	19 to 132	9.30 (236.2)	7.89 (200.3)	9.50 (241.3)
7HP	30,000 (3,500)	60,000 (7,000)	5,000	14,000 (6,364)	19 to 132	10.68 (271.3)	7.89 (200.3)	9.50 (241.3)
7HLH	30,000 (3,500)	60,000 (7,000)	4,000	14,000 (6,364)	19 to 132	9.91 (251.7)	7.89 (200.3)	9.50 (241.3)
W3B1	37,500 (4,240)	75,000 (8,470)	3,000	14,000 (6,364)	18 to 73	12.20 (309.9)	11.02 (279.9)	13.18 (334.8)
W3C	37,500 (4,240)	75,000 (8,470)	3,000	14,000 (6,364)	18 to 73	12.20 (309.9)	11.02 (279.9)	13.18 (334.8)
11HBA0A	48,675 (5500)	97,350 (11,000)	5,000	16,000 (7,273)	15 to 121	11.27 (286.3)	9.84 (249.9)	11.42 (290)
11HBA0B	48,675 (5500)	97,350 (11,000)	5,000	16,000 (7,273)	15 to 121	11.27 (286.3)	11.02 (279.9)	13.19 (335)
11HPA1D	48,675 (5500)	97,350 (11,000)	5,000	16,000 (7,273)	15 to 121	11.42 (290.1)	9.84 (249.9)	11.42 (290)
11HPA1E	48,675 (5500)	97,350 (11,000)	5,000	16,000 (7,273)	15 to 121	11.42 (290.1)	11.02 (279.9)	13.19 (335)
W5	50,000 (5,650)	100,000 (11,300)	5,000	14,000 (6,364)	15 to 49	12.71 (322.8)	11.02 (279.9)	13.18 (334.8)
W6C1	60,000 (6,780)	120,000 (13,560)	5,000	8,000 (3,634)	13 to 116	13.00 (330.2)	11.02 (279.9)	13.18 (334.8)
W7C	75,000 (8,470)	150,000 (16,950)	3,000	20,000 (9,091)	26 to 94	15.00 (381.0)	14.45 (367.0)	16.75 (425.5)
18HB/HC	80,000 (9,000)	160,000 (18,000)	5,000	20,000 (9,072)	25 to 141	12.75 (323.8)	11.02 (280.0)	13.19 (335.0)
W10C2	125,000 (14,120)	250,000 (28,250)	1,800	30,000 (13,636)	43 to 123	17.60 (447.0)	17.50 (444.5)	19.75 (501.7)
W12C3	125,000 (141,420)	250,000 (28,250)	5,000	20,000 (9,091)	20, 29, 40	19.10 (485.1)	14.45 (367.0)	16.75 (425.5)
W16C3	160,000 (18,080)	320,000 (36,160)	4,000	26,000 (11,818)	20, 29, 40	19.10 (485.1)	14.45 (367.0)	16.75 (425.5)
W20D1	250,000 (28,250)	500,000 (56,490)	1,800	42,000 (19,091)	26 to 115	20.70 (525.8)	19.00 (590.8)	21.90 (556.3)
W25D4	200,000 (22,600)	400,000 (45,190)	3,000	30,000 (13,636)	19 to 88	19.47 (494.5)	17.50 (444.5)	19.75 (501.7)
W40D2	500,000 (56,490)	1,000,000 (112,980)	2,500	30,000 (13,636)	18 to 40	23.52 (597.4)	20.94 (531.9)	22.39 (568.6)
W50D9	500,000 (56,490)	1,000,000 (112,980)	2,500	30,000 (13,636)	18 to 40	24.20 (614.7)	19.00 (482.5)	21.90 (556.3)
W50DG	500,000 (56,490)	1,000,000 (112,980)	2,500	30,000 (13,636)	76 to 213	26.01 (660.7)	20.93 (531.6)	22.39 (568.6)
W80D1	800,000 (90,388)	1,600,000 (180,776)	2,500	30,000 (13,636)	17, 20, 35	24.17 (613.9)	23.26 (290.8)	25.25 (641.4)
W90D	1,470,000 (166,090)	2,940,000 (332,290)	3,250	45,800 (20,774)	94 to 151	43.40 (1,102.4)	22.84 (580.1)	25.78 (654.8)
W90K	1,470,000 (166,090)	2,940,000 (332,290)	2,200	45,800 (20,774)	25	30.50 (774.7)	22.84 (580.1)	25.78 (654.8)



轮边驱动产品

CT/CW 履带驱动及轮边驱动减速机

性能和应用参数

型号	间断扭矩 (Nm)	减速机长度 in (mm) L	名义速比 (x:1)	型号	间断扭矩 (Nm)	减速机长度 in (mm) L	名义速比 (x:1)
CT18	18,000	12.57 (319.3)	63 to 141	CW12	12,000	10.20 (259.0)	18 to 41
CT26	26,000	13.94 (354.1)	51 to 202	CW18	18,000	11.10 (282.0)	25 to 51
CT35	35,000	14.13 (358.9)	63 to 136	如果你需要更详细的信息, 请与我们联系欧瑞康费尔菲尔德联系			
CT50	45,000	14.85 (377.2)	60 to 169				

直角驱动

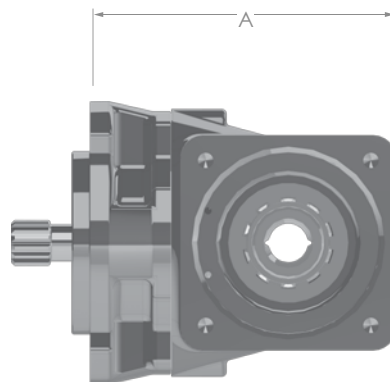
性能参数

机型参数

型号	最大连续输出扭矩 lb-in (Nm)	最大输入转速 (RPM)	名义速比 (x:1)	总长度 in (mm) A	轴直径 in (mm)
RA701, 02 & 05	3,700 (418)	3,400	1	8.31 (211.1)	1.25 (31.8)
RA703 & 06	3,700 (418)	3,400	1	8.31 (211.1)	1.75 (44.5)
RA708	1,836 (200)	3,700	1.53	9.10 (231.1)	0.88 (22.4)
RA10	3,700 (418)	3,000	2.78	10.72 (272.3)	1.75 (44.5)
RA15	12,250 (1,384)	3,000	1.08, 1.36	11.41 (289.8)	1.75 (44.5)



CT/CW 履带驱动及轮边驱动减速机



直角驱动

行星齿轮减速机

T2 双速减速模块

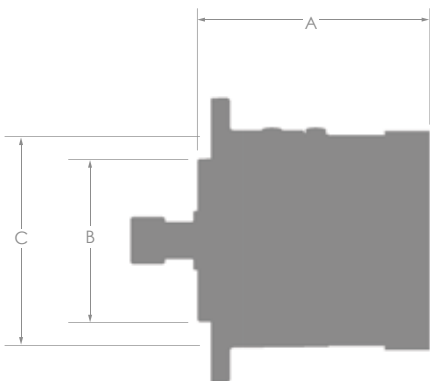
性能参数			机型参数			
型号	最大连续输入扭矩 lb-in (Nm)	最大输入转速 (RPM)	名义 速比 (x:1)	总长度 in (mm) A	止口安装 in (mm) B	螺栓布孔圆直径 in (mm) C
T2A	2,500 (280)	3,500	3.5 to 4	8.07 (204.98)	6.00 (152.40)	9.00 (228.60)
T2B	4,000 (450)	3,750	3.5 to 4	9.11 (231.39)	6.00 (152.40)	9.00 (228.60)

Torque II 双速减速机

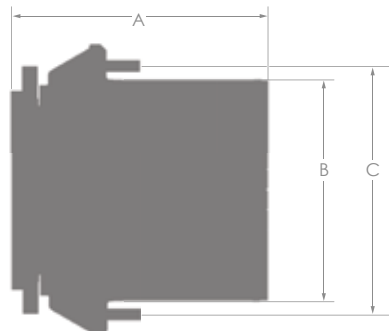
性能参数				机型参数				
型号	最大连续扭矩 lb-in (Nm)	最大间断扭矩 lb-in (Nm)	最大输入转速 (RPM)	最大径向负载 lb (kg)	名义速比 (x:1)	总长度 in (mm) A	止口安装 in (mm) B	螺栓布孔圆直径 in (mm) C
W9T	90,000 (10,170)	180,000 (20,340)	3,750	27,000 (12,273)	35	12.20 (309.88)	12.00 (304.80)	14.17 (359.92)
W12T	125,000 (14,120)	250,000 (28,250)	3,750	36,000 (16,364)	20, 29, 40	16.80 (426.72)	14.50 (368.30)	16.75 (425.45)
W16T	160,000 (18,080)	320,000 (36,160)	3,750	36,000 (16,364)	20, 29, 40	16.80 (426.72)	14.50 (368.30)	16.75 (425.45)

特殊输入附件

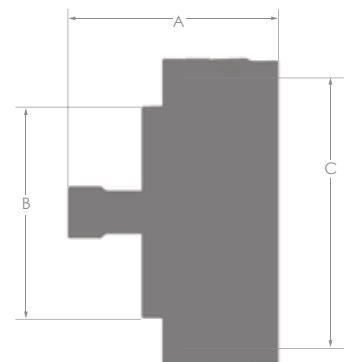
性能参数				机型参数					
型号	最大连续扭矩 lb-in (Nm)	最大间断扭矩 lb-in (Nm)	最大输入转速 (RPM)	最大径向负载 lb (kg)	名义 速比 (x:1)	总长度 in (mm) A	止口安装 in (mm) B	螺栓布孔 圆直径 in (mm) C	轴直径 in (mm)
G07	6,000 (680)	12,000 (1,360)	4,000	0	3.6	5.10 (129.54)	5.00 (127.00)	6.37 (161.80)	1.25 (31.75)
SICD	15,000 (1,695)	30,000 (3,390)	5,000	5,500 (2,500)	3 to 6	11.16 (283.46)	6.00 (152.40)	9.00 (228.60)	1.75 (44.45)
IA15	15,000 (1,695)	30,000 (3,390)	3,000	19,000 (8,618)	NA	15.00 (381.00)	6.00 (152.40)	9.00 (228.60)	3.00 (76.20)
IAB	1,850 (210)	3,700 (420)	3,000	1,800 (818)	NA	6.91 (175.50)	4.00 (101.06)	5.75 (146.00)	1.38 (34.90)
IAC	5,700 (644)	11,400 (1,288)	3,000	4,350 (1,977)	NA	9.36 (237.80)	5.00 (127.00)	6.38 (161.90)	1.50 (38.10)
IAD	15,000 (1,695)	30,000 (3,390)	3,000	9,000 (4,091)	NA	13.68 (347.40)	6.00 (152.40)	9.00 (228.60)	2.00 (50.80)



T2 双速减速模块



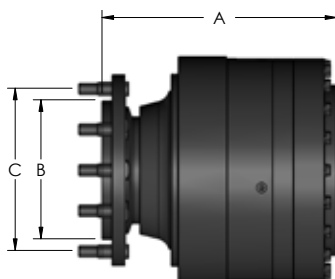
Torque II 双速减速机



特殊输入附件

主轴法兰轴输出

性能参数				机型参数				
型号	最大连续扭矩 lb-in (Nm)	最大间断扭矩 lb-in (Nm)	最大输入转速 (RPM)	最大径向负载 lb (kg)	名义速比 (x:1)	总长度 in (mm) A	止口安装 in (mm) B	螺栓布孔圆直径 in (mm) C
S1B9	15,000 (1,690)	30,000 (3,390)	4,000	6,000 (2,727)	19 to 69	10.56 (268.2)	4.62 (117.4)	6.00 (152.4)
S1E	15,000 (1,690)	30,000 (3,390)	5,000	7,000 (3,182)	3 to 6	9.00 (228.6)	4.00 (101.6)	5.50 (139.7)
S2B1	25,000 (2,820)	50,000 (5,650)	4,000	13,000 (5,909)	14 to 50	12.59 (319.8)	7.00 (177.8)	8.25 (209.6)
S3B8	37,500 (4,240)	75,000 (8,470)	3,000	16,000 (7,273)	19 to 74	12.74 (323.6)	7.00 (177.8)	9.50 (241.3)
S6B3	60,000 (6,780)	120,000 (13,560)	5,000	15,500 (7,031)	13 to 42	15.88 (403.4)	7.00 (177.8)	9.50 (241.3)
S7B2	75,000 (8,470)	150,000 (16,950)	3,000	20,000 (9,091)	27 to 95	15.25 (387.4)	9.00 (228.6)	10.50 (266.7)
S10B4	125,000 (14,120)	250,000 (28,250)	1,800	30,000 (13,636)	44 to 124	18.16 (461.3)	9.50 (241.3)	12.00 (304.8)
S12B2	125,000 (14,120)	250,000 (28,250)	5,000	15,000 (6,818)	20, 29, 40	19.79 (502.7)	9.00 (228.6)	10.50 (266.7)
S16B2	160,000 (18,080)	320,000 (36,160)	4,000	15,000 (6,818)	20, 29, 40	19.79 (502.7)	9.00 (228.6)	10.50 (226.7)
S20B1	250,000 (28,250)	500,000 (56,490)	1,800	42,000 (19,051)	27 to 116	21.50 (546.1)	12.75 (323.9)	15.00 (381.0)
S25B4	200,000 (22,600)	400,000 (45,190)	3,000	34,000 (15,455)	19, 29, 36	22.01 (559.1)	11.00 (279.4)	12.75 (323.0)
S40B1	400,000 (45,200)	800,000 (90,400)	3,000	30,000 (13,636)	25, 40	23.00 (584.2)	12.75 (323.9)	15.00 (381.0)
S50B1	500,000 (56,490)	1,000,000 (112,980)	3,000	42,000 (19,091)	25 to 289	24.09 (611.9)	12.75 (323.9)	15.00 (381.0)
S80B2	800,000 (90,388)	1,600,000 (180,776)	2,500	50,000 (22,727)	36, 134, 143	32.80 (833.1)	9.84 (249.9)	13.78 (350.0)
S90B1	1,470,000 (166,090)	2,940,000 (332,290)	2,200	45,800 (20,774)	26	32.40 (823.0)	15.75 (400.0)	18.11 (460.0)

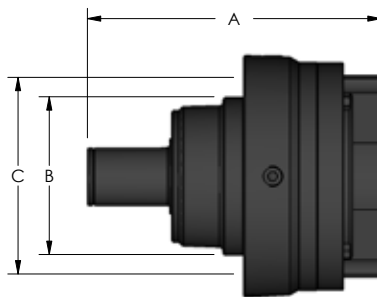


主轴法兰轴输出

行星齿轮减速机

轴输出

性能参数				机型参数					
型号	最大连续扭矩 lb-in (Nm)	最大间断扭矩 lb-in (Nm)	最大输入转速 (RPM)	最大径向负载 lb (kg)	名义速比 (x:1)	总长度 in (mm) A	止口安装 in (mm) B	螺栓布孔 圆直径 in (mm) C	轴直径 in (mm)
S07A	7,500 (850)	15,000 (1,690)	5,000	4,000 (1,818)	4	9.86 (250.4)	6.50 (165.1)	7.50 (190.5)	1.75 (44.5)
S1A1/A2	15,000 (1,690)	30,000 (3,390)	4,000	7,000 (3,182)	19 to 69	11.90 (302.3)	8.56 (217.4)	9.50 (241.3)	2.00 (50.8)
S1C5	15,000 (1,690)	30,000 (3,390)	5,000	7,000 (3,182)	3 to 6	11.02 (280.0)	5.40 (137.2)	7.25 (184.2)	2.00 (50.8)
S1CK	15,000 (1,690)	30,000 (3,390)	5,000	7,000 (3,182)	3 to 6	12.83 (325.9)	5.00 (127.0)	6.37 (161.8)	2.13 (54.1)
S2A3	25,000 (2,820)	50,000 (5,650)	4,000	15,000 (6,818)	14 to 50	16.66 (423.2)	8.25 (209.6)	10.10 (256.5)	2.98 (75.7)
S3A6	37,500 (4,240)	75,000 (8,470)	3,000	16,000 (7,273)	19 to 74	13.68 (347.5)	8.25 (209.6)	10.10 (256.5)	2.98 (75.7)
S6A2	60,000 (6,780)	120,000 (13,560)	5,000	15,500 (7,045)	13 to 42	15.84 (402.3)	11.00 (279.4)	13.19 (335.0)	3.00 (76.2)
S6C7	60,000 (6,780)	120,000 (13,560)	2,500	15,500 (7,045)	4 to 6	14.57 (370.1)	11.00 (279.4)	13.19 (335.0)	3.00 (76.2)
S7AB	75,000 (8,470)	150,000 (16,950)	3,000	20,000 (9,091)	27 to 95	18.10 (459.7)	15.00 (381.0)	16.75 (425.3)	3.50 (88.9)
S7A1	75,000 (8,470)	150,000 (16,950)	3,000	20,000 (9,091)	27 to 95	18.10 (459.7)	12.50 (317.5)	13.63 (346.2)	3.75 (95.3)
S10A1/A2	125,000 (14,120)	250,000 (28,250)	1,800	30,000 (13,636)	44 to 124	21.30 (541.0)	18.26 (463.8)	19.75 (501.6)	4.33 (110.0)
S12A2	125,000 (14,120)	250,000 (28,250)	5,000	15,000 (6,818)	20, 29, 40	19.87 (504.7)	12.50 (317.5)	13.63 (346.2)	3.50 (130.3)
S16A4/A6	160,000 (18,080)	320,000 (36,160)	4,000	20,000 (9,091)	20, 29, 40	23.61 (599.7)	12.50 (317.5)	13.63 (346.2)	3.50 (88.9)
S20A1	250,000 (28,250)	500,000 (55,490)	1,800	42,000 (19,091)	27 to 116	25.20 (640.1)	19.00 (482.6)	21.90 (556.3)	5.13 (130.0)
S25A2	200,000 (22,600)	400,000 (45,190)	3,000	30,000 (13,636)	19, 29, 36	23.40 (594.4)	18.26 (463.8)	19.75 (501.7)	4.33 (110.0)
S40A	400,000 (45,198)	800,000 (90,395)	3,000	30,000 (13,636)	25, 40	26.70 (678.2)	21.40 (543.6)	22.39 (568.6)	5.12 (130.0)
S50A1	500,000 (56,490)	1,000,000 (113,000)	3,000	30,000 (13,636)	25 to 289	27.80 (706.1)	19.00 (482.6)	21.90 (556.3)	5.13 (130.3)



轴输出



无论您需要什么样的驱动方式，我们都能为您提供解决方案。

Oerlikon Drive Systems

oerlikon
fairfield

oerlikon
graziano

Sales Office – China

上海裕通路100号洲际中心48层
48 Floor, International Center
100 Yutong Road, Shanghai, PRC 200070
+86.21.52885888
+86.21.52885800 (传真)
www.oerlikon.com/fairfield

如果你需要更详细的信息，请与我们欧瑞康费尔菲尔德联系。

分发