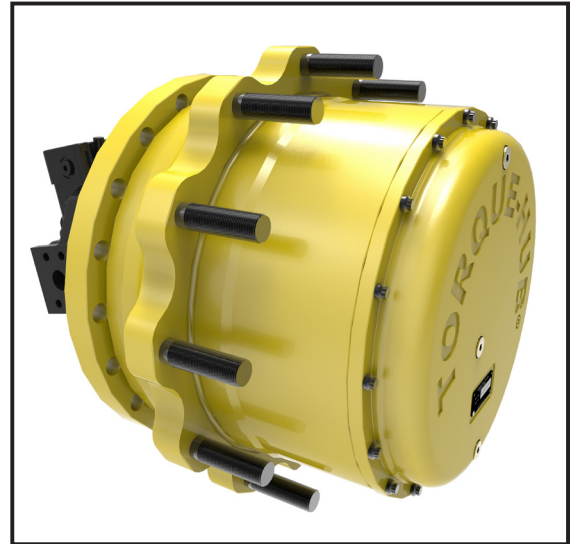


C026 Wheel Drives

Oerlikon Fairfield's new C026 Torque-Hub® planetary drives are designed to meet the toughest propel and braking requirements of the largest self-propelled sprayers in the world. Our new wet disc output service brake system will help machine designers meet the toughest braking standards in the industry including ANSI/ASAE 365. A wide main bearing spread with heavy duty bearing plate retention and steel spindle provide structural capacity to meet the demanding load requirements of self-propelled sprayers. The standard bearing package is designed to handle structural loading requirements of single wheel and flotation tire configurations. The heavy duty bearing package will allow the sprayer to be equipped with dual tires, providing superior bearing life and structural integrity. The spring applied hydraulic release input parking brake is designed to hold the machine on the grade. The cartridge motor mount will house 110cc motors for ultimate machine performance. Oerlikon Fairfield heavy duty gearing ensures the highest quality, performance, life and efficiency in the market.



Markets

- **Large Self-Propelled Agricultural Sprayers**
Tank Capacity: Up to 6,800 liters (1,800 gallons)
GVW: Up to 28,000 Kg (62,000 lbs.)
Power: Up to 300 kW (400 Hp)
Tire Diameter: Up to 2,100 mm (82 in.)

Features

- Rating: 26,000 Nm (230,000 in-lbs) intermittent torque rating
- Ratios: 22:1 to 30:1
- Cartridge Motor Mount: Danfoss 110cc, Parker 110cc, Rexroth 107cc
- Input Brake: Spring Applied & Hydraulic Release 600 Nm (5,300 in-lbs) to 1000 Nm (8,850 in-lbs)
- Wide Bearing Spread
- Tested Thermal Characteristics at Rooding Conditions

Special Options

- Output Service Brake: Wet Disc – Pressure Applied Spring Return
- Dual Wheel Bearing Configuration up to 760mm row width

Oerlikon Fairfield

US 52 South / PO Box 7940, Lafayette, IN 47903 (USA)

T +1.765.772.4000 | F +1.765.772.4001

marketing@fairfieldmfg.com

www.oerlikon.com/fairfield

